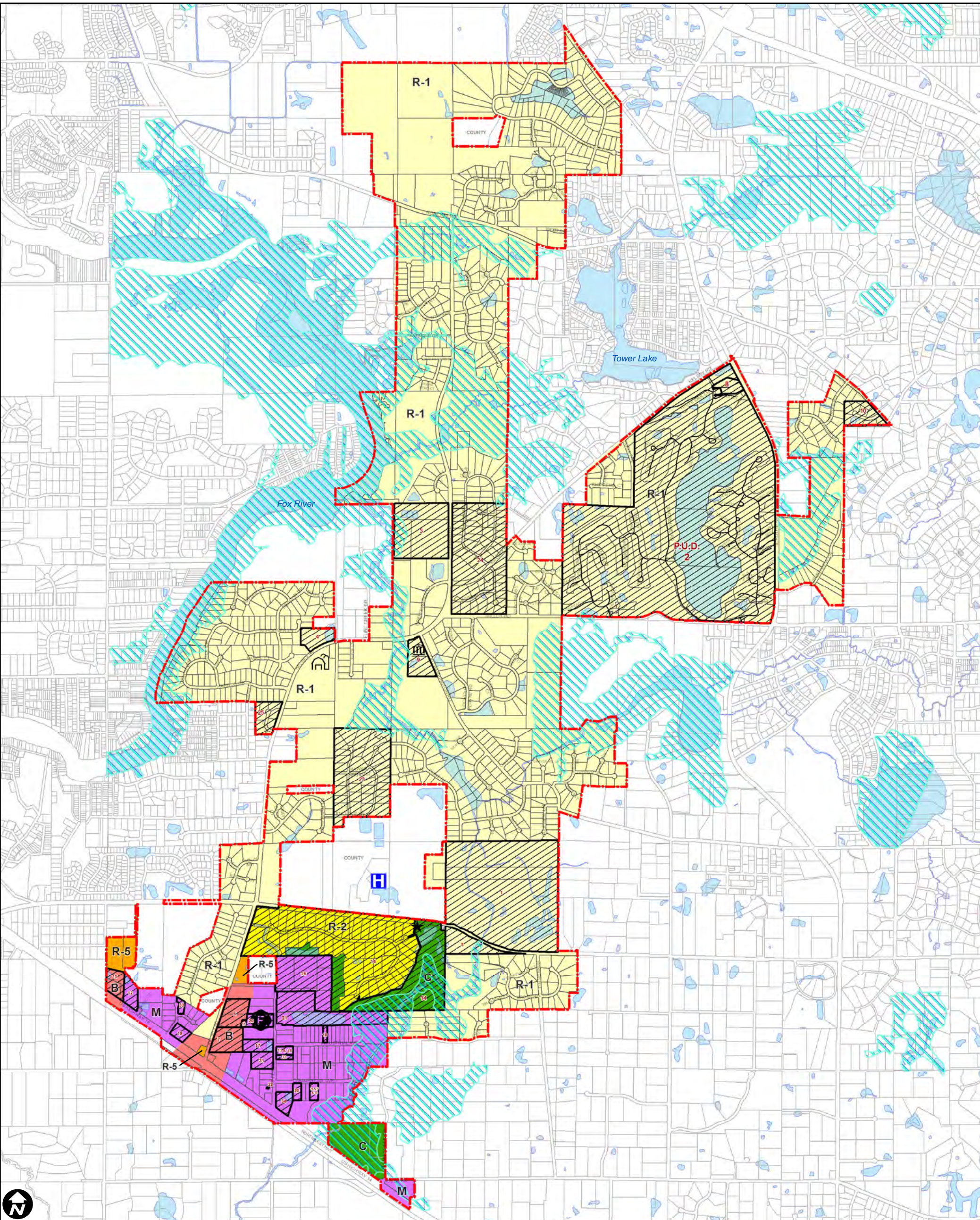


Village of Lake Barrington Zoning and ADID Wetlands Map



DISTRICT	USE	LOT AREA
R-1	SINGLE FAMILY RESIDENCE	40,000 SF
R-2	SINGLE FAMILY RESIDENCE	80,000 SF
R-5	SINGLE FAMILY RESIDENCE	200,000 SF
B	BUSINESS	40,000 SF
O	OFFICE AND RESEARCH	200,000 SF
M	MANUFACTURING AND INDUSTRIAL	40,000 SF
C	CONSERVATION	40,000 SF

SPECIAL USE ORDINANCES IN ZONING DISTRICTS		
1 1969-O-02	12 2005-O-05 P.U.D.	23 2005-O-04
2 2006-O-29 P.U.D.	13 2000-O-12	24 2005-O-26
3 1973 O-4 P.U.D.	14 2000-O-16	25 2006-O-17
4 1989-O-13	15 2000-O-19	26 2006-O-23
5 1986-O-06	16 2001-O-24	27 2007-O-17 P.U.D.
6 2005-O-12	17 2003-O-11	28 2008-O-11
7 2001-O-20	18 2003-O-12	29 2009-O-06
8 2001-O-13	19 2003-O-19	30 2009-O-14
9 2003-O-06	20 2004-O-06	31 2009-O-16
10 1996-O-04	21 2004-O-13	
11 2000-O-25	22 2004-O-26 P.U.D.	

LEGEND

- Special Use Zoning
- ADID Wetlands
- Boundary
- Water Features
- Lake Barrington Village Hall
- Freier Farm
- BCFPD - Station 2
- Good Shephard Hospital
- Citizens for Conservation

Published: February 2010
 Data Sources: Village of Lake Barrington, BAGIS, Lake and McHenry Counties
 Projection: State Plane Illinois East

0 500 1000 2000 Feet



Disclaimer of Liability: GIS maps and related data contained therein ("maps and data") made available by the Barrington Area Council of Governments (BACOG) and its members are intended for reference purposes only. BACOG provides such maps and data AS IS without any implied or expressed warranties to its accuracy and completeness. Such Maps and data are believed to be accurate but accuracy is not in any way guaranteed and modifications are made to such maps and data on an ongoing basis as new information becomes available. Any use and/or application of such maps and data is done solely at the user's own risk.